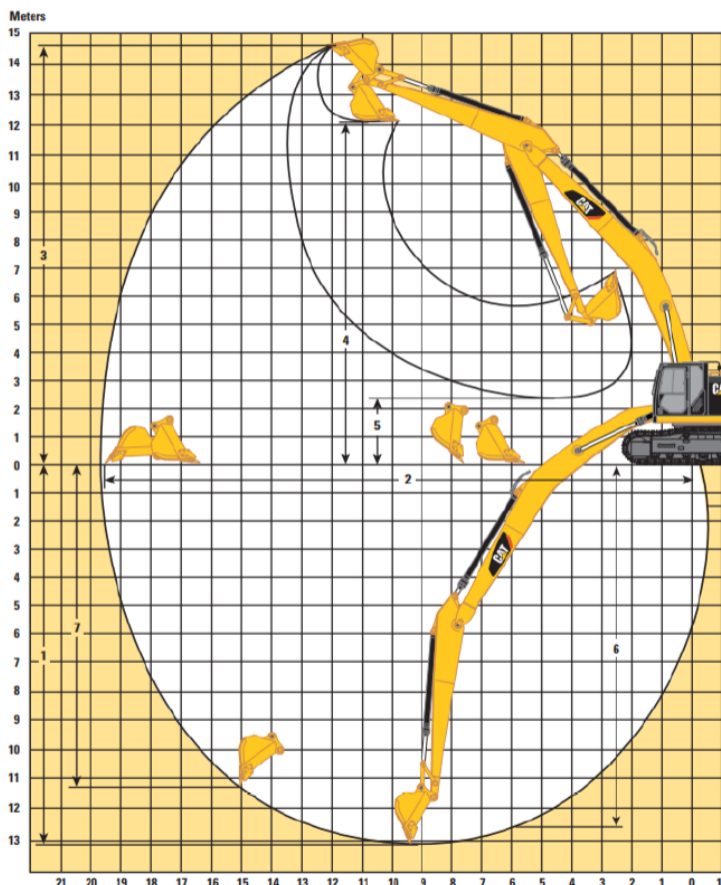




**DW 2 - Backhoe Dredger - Cat 352 LRE - 60 ton**



#### PONTOON

- Modular size 18 / 24 x 12 x 1,2 m
- Equipped with 2 stabilizing spuds, workshop and spares stores

#### CAT 352 LRE

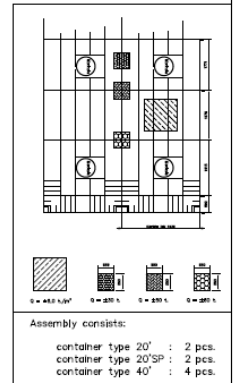
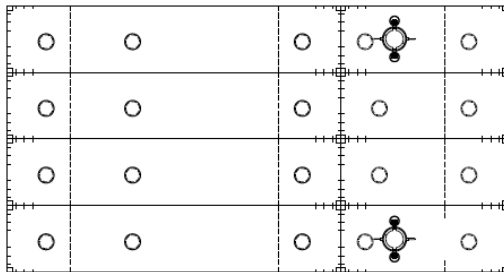
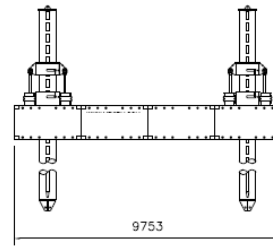
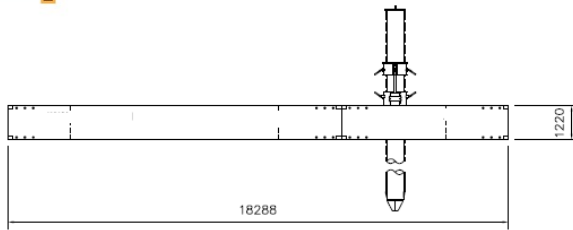
- Net power 304 kW - 413 hp
- USA Tier 4 final emission standard
- Bucket range 1,0 - 2,0 m<sup>3</sup>
- Orangepeel and Clamshell 1.000 l
- Hamers, (excentric) rippers smal size
- Fuel consumption range 25 - 35 l/hr
- Survey DGPS system

#### SPREAD

- Fully road or sea transportable



REV.	DATE	BY	CHKD.	APPVD.	REMARK



NAME		PROJECT		SCALE	
Dim. 18.29 x 12.19 x 1.22 m		1:1		1:1	
DATE	BY	DATE	BY	DATE	BY



**Dredging Work can also assist you with the charter of:**

- Trailing suction hopper dredgers 1.000 up to 5.000 m3
- Cutter suction dredgers small to medium size
- All other dredging equipment like pumps and booster stations
- All related dry plant like bulldozers, wheelloaders, dump trucks

**“Let’s Dig Together”**

**CREW: EU / TCN / LOCAL**

- Operators
- Barge masters
- Technical supervisors
- Project managers

**MARINE SUPPORT**

- Barges : Split / Hopper / Flat
- Tugs & AHT: 10 - 50 tpb

**SUPPORT & CONSULTANCY**

- Soil assessment, work methods, production and costing
- Mobilisation & demobilisation